

INSTALLATION MANUAL

13598

Level of Difficulty

Difficult

Installation difficulty levels are based on time and effort involved and may vary depending on the installer level of expertise, condition of the vehicle and proper tools and equipment.

Weight Carrying Capacity

Gross trailer weight (GTW)	3,500 lbs.
Tongue weight (TW)	525 lbs.

Tools Required

Ratchet	Socket extension, 6"
Torque wrench	T-25 Torx bit
Socket, 8mm	Flathead screwdriver
Socket, 10mm	Panel trim removal tool
Socket, 15mm	Safety glasses

* For a tools reference guide visit curtmfg.com/trailer-hitch-installation

Product Registration and Warranty

CURT stands behind our products with industry-leading warranties. To get copies of the product warranties, register your purchase or provide feedback, visit: warranty.curtgroup.com/surveys

⚠ WARNING

Never exceed the vehicle manufacturer's recommended towing capacity.

Product Photo



NOTICE

Visit www.curtmfg.com for a full-color copy of this instruction manual, as well as helpful videos, guides and much more!

Before you begin installation, read all instructions thoroughly.

Proper tools will improve the quality of installation and reduce the time required.

This installation requires:

- No drilling required
- Remove taillights and underbody panel
- Bumper cover and beam removal required

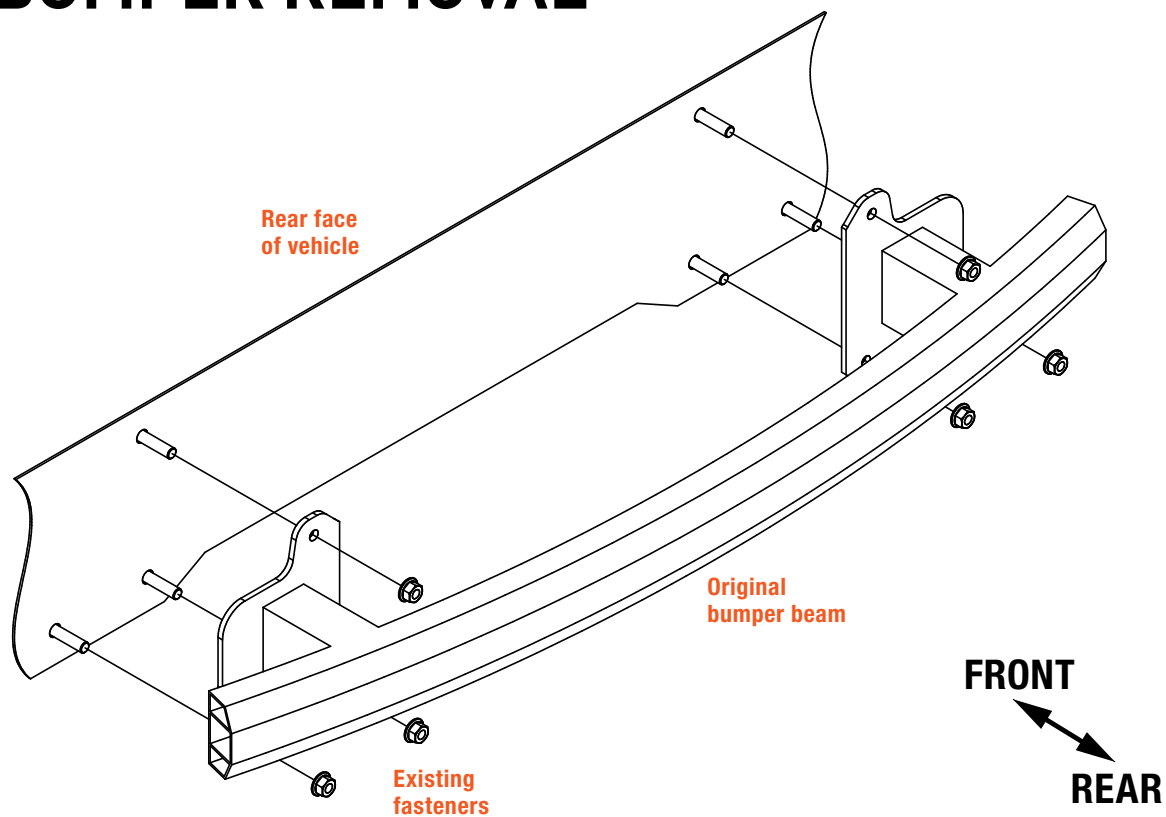
Periodic inspection of the trailer hitch should be performed to ensure all mounting hardware remains tight and structural components are secure.

To help prevent damage to the product or vehicle, refer to the specified torque specifications when securing hardware during the installation process.

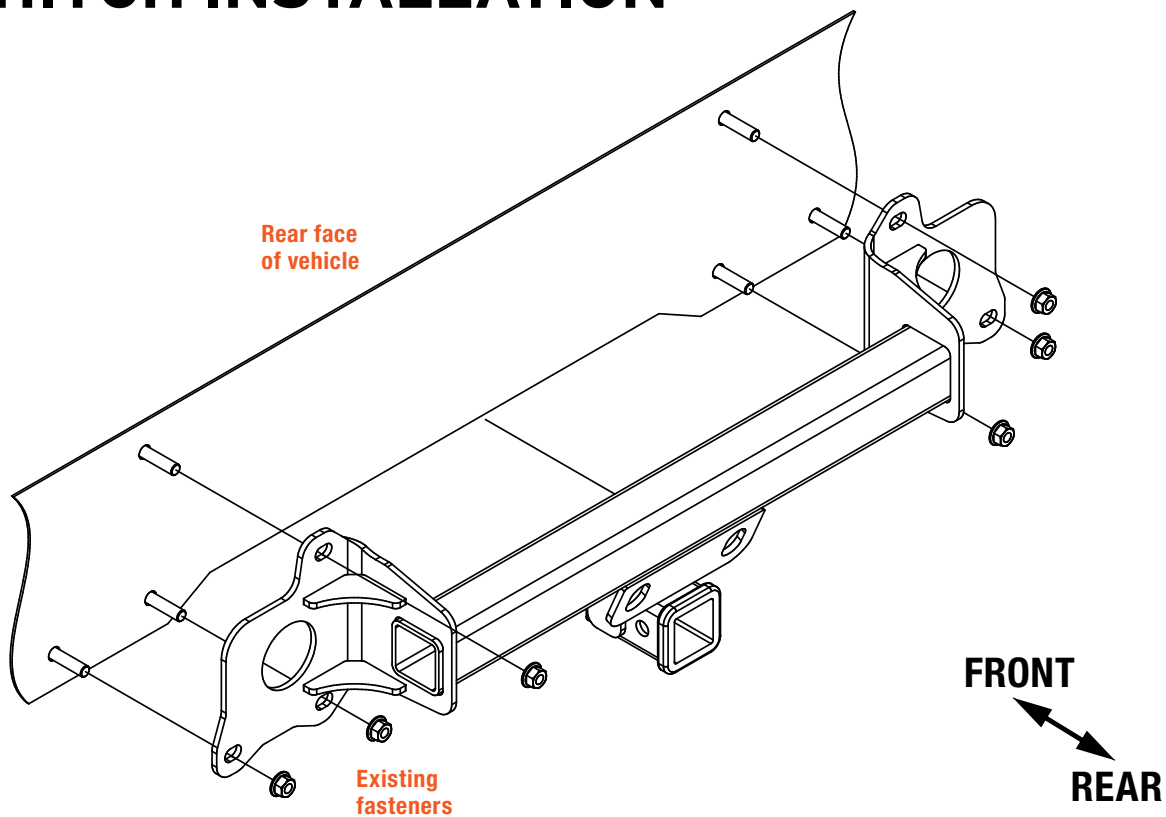
SAFETY INSTRUCTIONS

Safety glasses should be worn at all times while installing this product.

BUMPER REMOVAL



HITCH INSTALLATION



Step 1

Remove the large, rearmost underbody panel by removing eleven screws using a 10mm socket and a T-25 Torx bit. Use a screw driver to remove the three plastic push fasteners along the outer edges of the panel and the four push fasteners along the lower edge of the wheel well liner securing it to the underbody panel.



Step 2

Begin to loosen the wheel well trim by using a plastic trim pry tool to remove two clips from the lower end and four along the side.

Repeat on the other side of the vehicle.



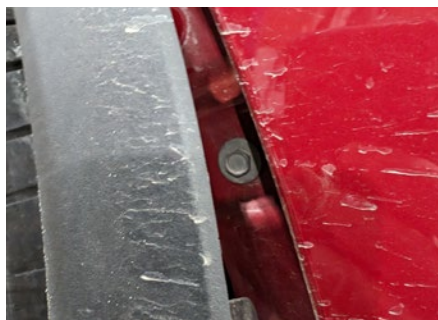
Step 3

To loosen the wheel well liners, remove the plastic fastener in the middle of the liner by hand.



Step 4

Remove one bolt per side behind the wheel well liner with a 10mm socket.



Step 5

Open the rear hatch of the vehicle to remove the carpet panel. Carefully pry between the trunk panel and rubber trim to remove the trunk panels and gain access to the taillight wiring connector and fasteners. Once accessed, remove the two nuts with a 10mm socket and unclip the taillight wiring for each taillight.



Step 6

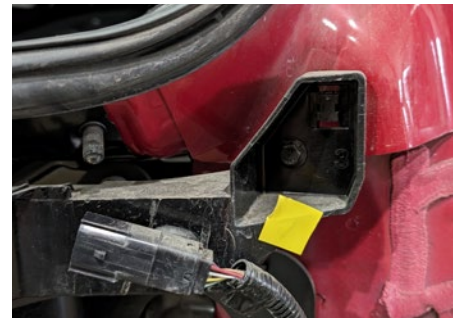
Remove the one bolt under each taillight opening that attach to the bumper cover. Working from the wheel well towards the center of the bumper, carefully unclip the edge of the bumper cover using a plastic pry tool if necessary.

Once unclipped, reach behind the passenger side of the cover and unclip any wiring for sensors that may be present. Place the bumper cover in a location so as not to be damaged during the rest of the installation.



Step 7

Temporarily loosen the sensor bar above the aluminum bumper by removing the four bolts with a 10mm socket. Set the sensor bar in the vehicle hatch opening.



Step 8

Remove the aluminum bumper beam from the vehicle by removing six flange nuts with a 15mm socket and return the bumper beam to the vehicle owner.



Step 9

Using the nuts removed in the previous step, raise the hitch into position and loosely install the factory nuts.



Step 10

Torque all hitch fasteners to 42 ft-lbs.

Step 11

Reassemble the vehicle in the reverse of disassembly, making sure to check that all wiring is assembled and functioning properly.



TOWING BASICS & SAFETY INFORMATION

For information on safely towing your trailer, visit curtmfg.com/understanding-towing.